

NOTE: all measurements are from the center.

1. Measure and mark the long axis.

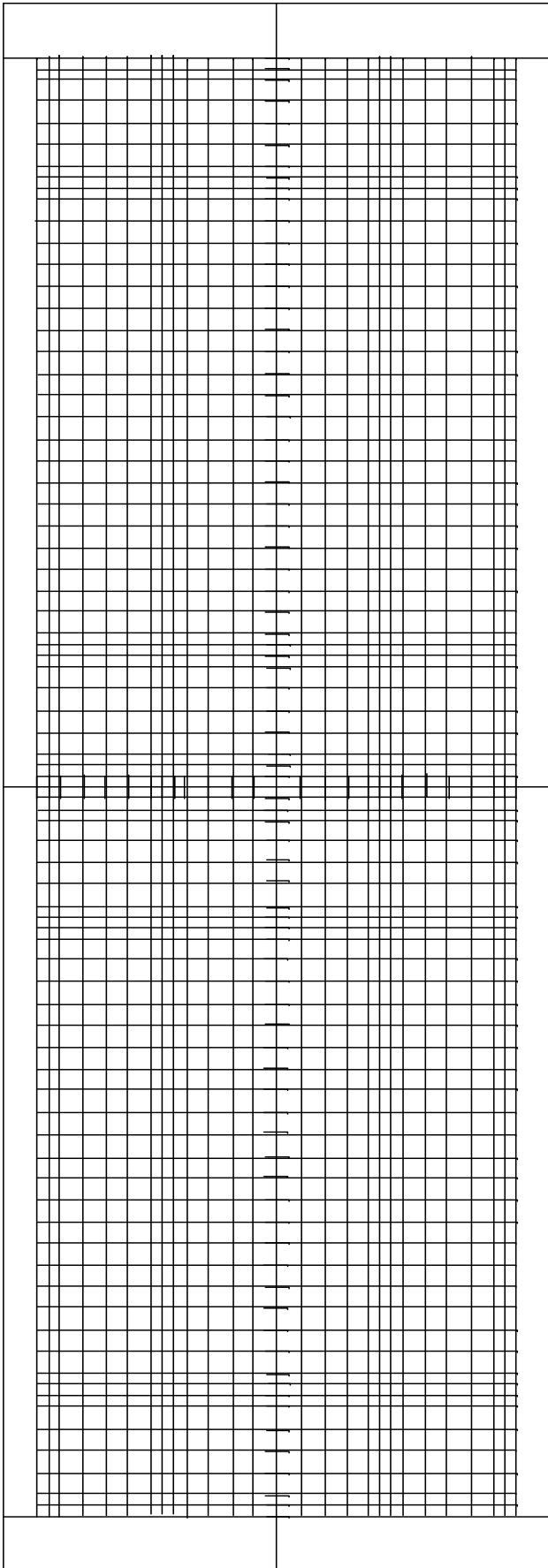
	mm	60
1	2	1/2
2	2	1/2
3	2	1/2
4	4	1
5	4	1
6	4	1
7	4	1
8	2	1/2
9	2	1/2
10	2	1/2
11	20 X 4	20 X 1
31	2	1/2
32	2	1/2
34	2	1/2
35	4	1
36	4	1
37	4	1
38	4	1
39	2	1/2
40	2	1/2

2. Repeat for the other side

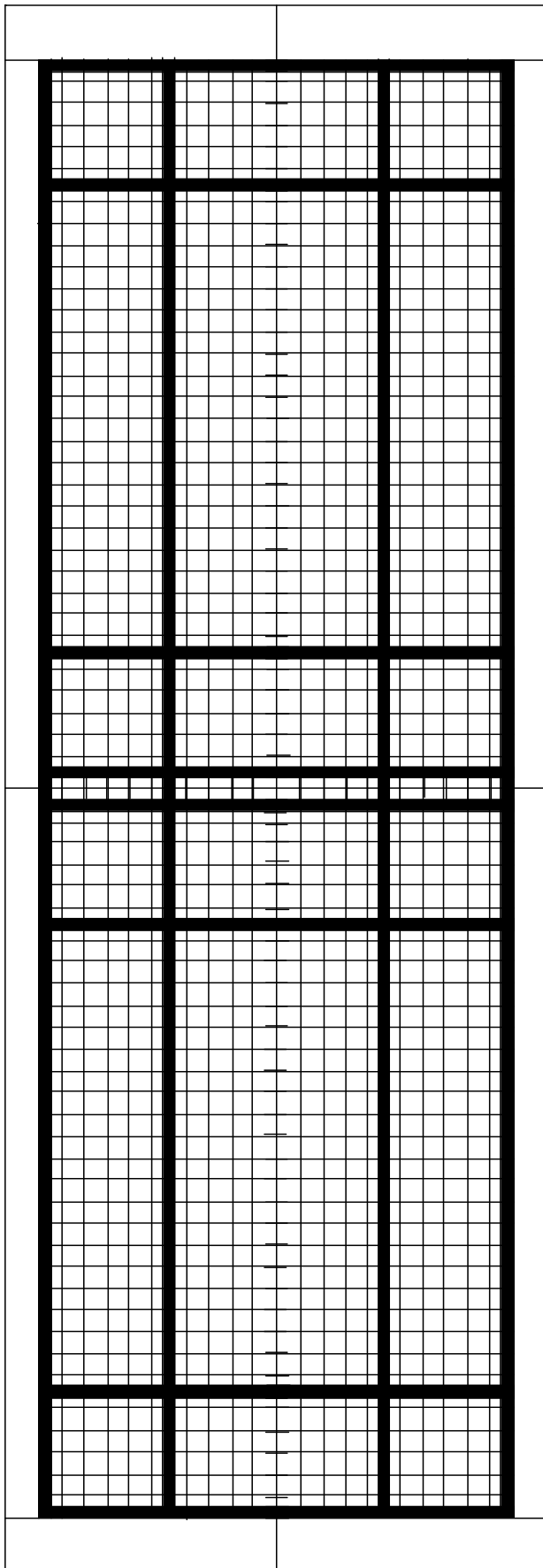
3. Measure and mark the short axis.

	mm	60
1	4	1
2	4	1
3	4	1
4	4	1
5	2	1/2
6	2	1/2
7	2	1/2
8	4	1
9	4	1
10	4	1
11	4	1
12	2	1/2
13	2	1/2

4. Repeat for other side of center.



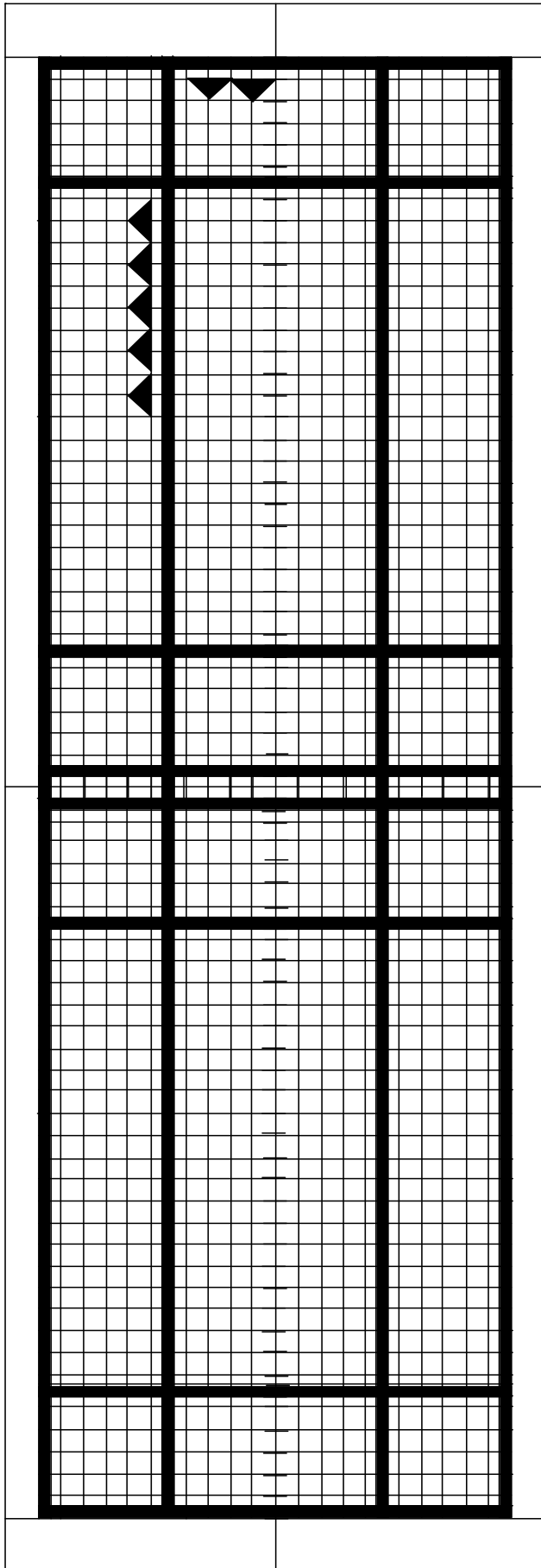
Use the T-square to complete the grid,
following the tick marks.



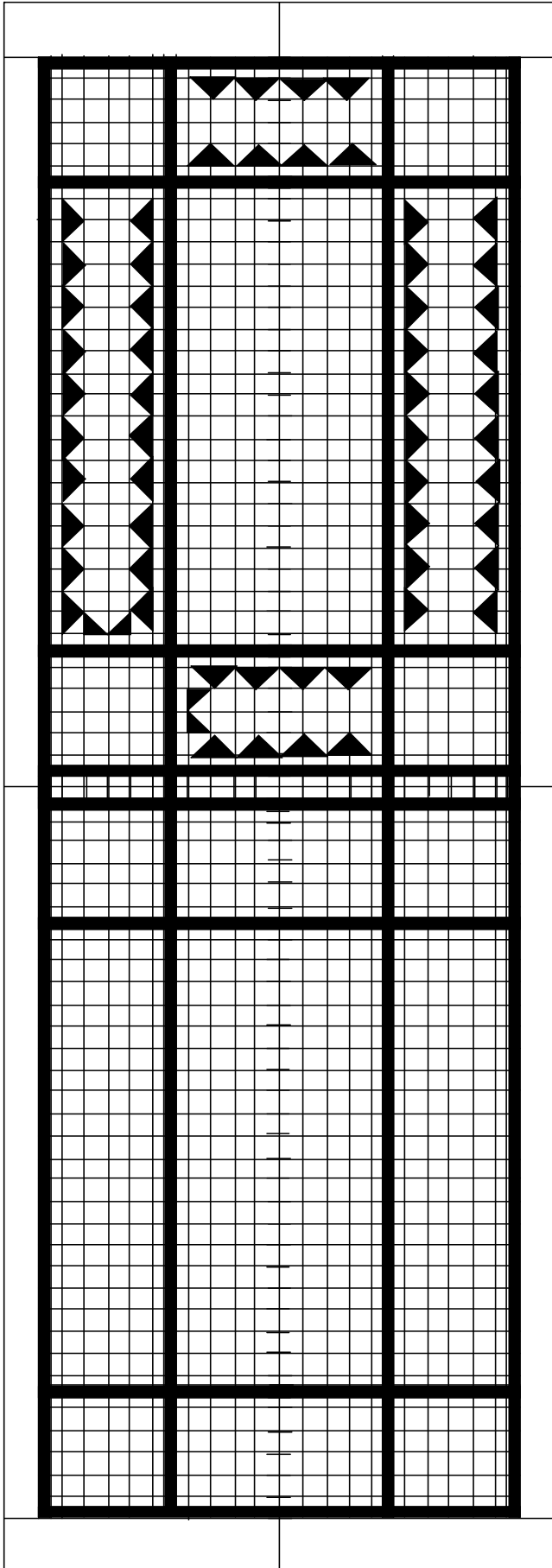
ProtBrd3Print

Cut the two-sided chips for the borders. Cut the short ones across the grain first.

NOTE: You may want to practice these cuts first.



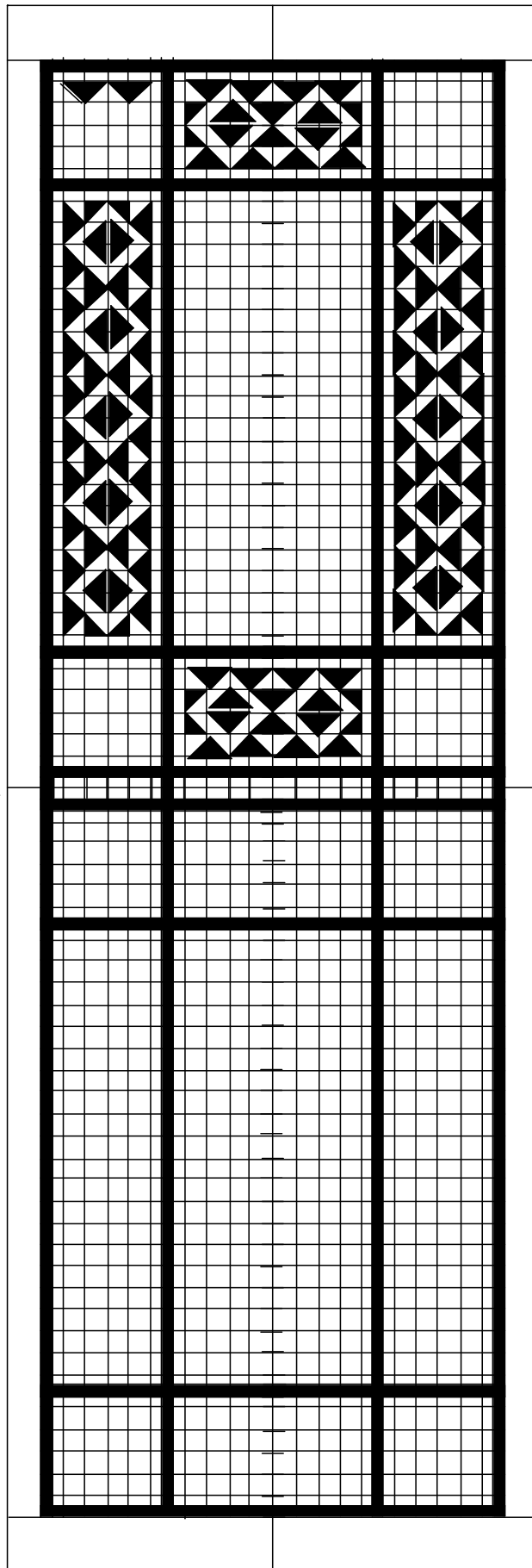
Cut the three sided chips for part of the Diamond border. When making this border, always take the chip next to the centerline first and work out to the end. If you do not do it this way, the diamond pattern will not work.



Finish the outside three-sided chips for the diamond border.

Cut the half chips for the end diamond.

GRAIN



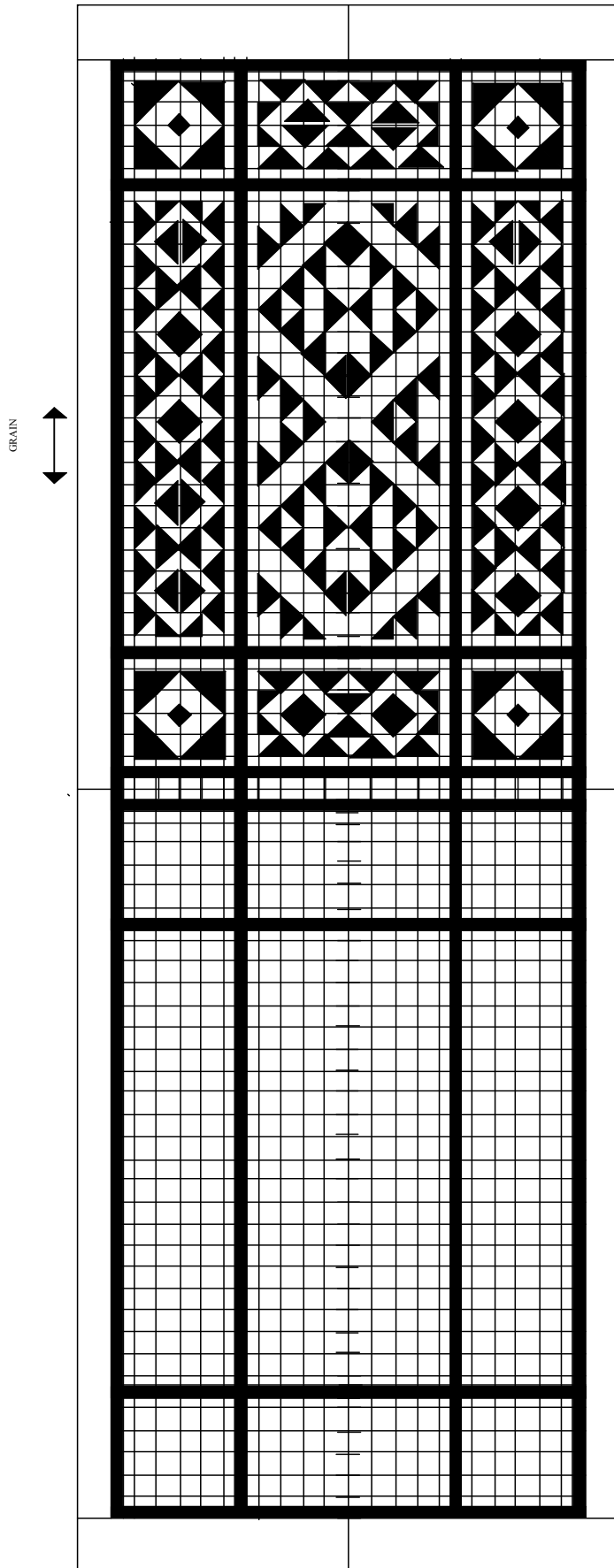
Finish the diamond pattern border.

Start the Pattern for the corners.

Make the first cut across grain as shown.

This will help keep the edges from cracking out.

Note the cut adjacent to the first chip, this is to keep from chipping out the last edge.



Complete the carving.

The patterns in the field are centered 5 spaces from the edges and 4 spaces from the bottom and top.